

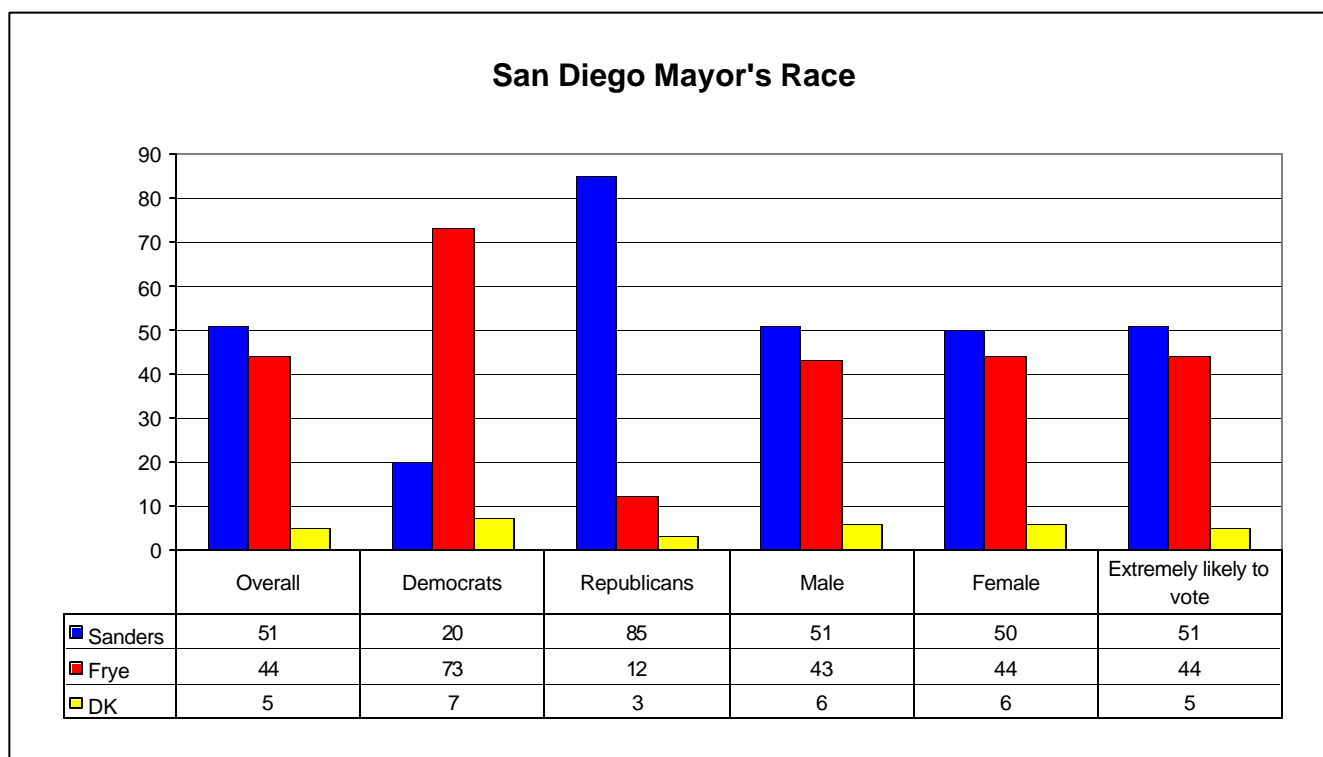
## Monday Datamar Daily Tracking Survey

**Date: November 7, 2005**
**Contact: Raul Furlong  
619-579-8244**

### Sanders/Frye

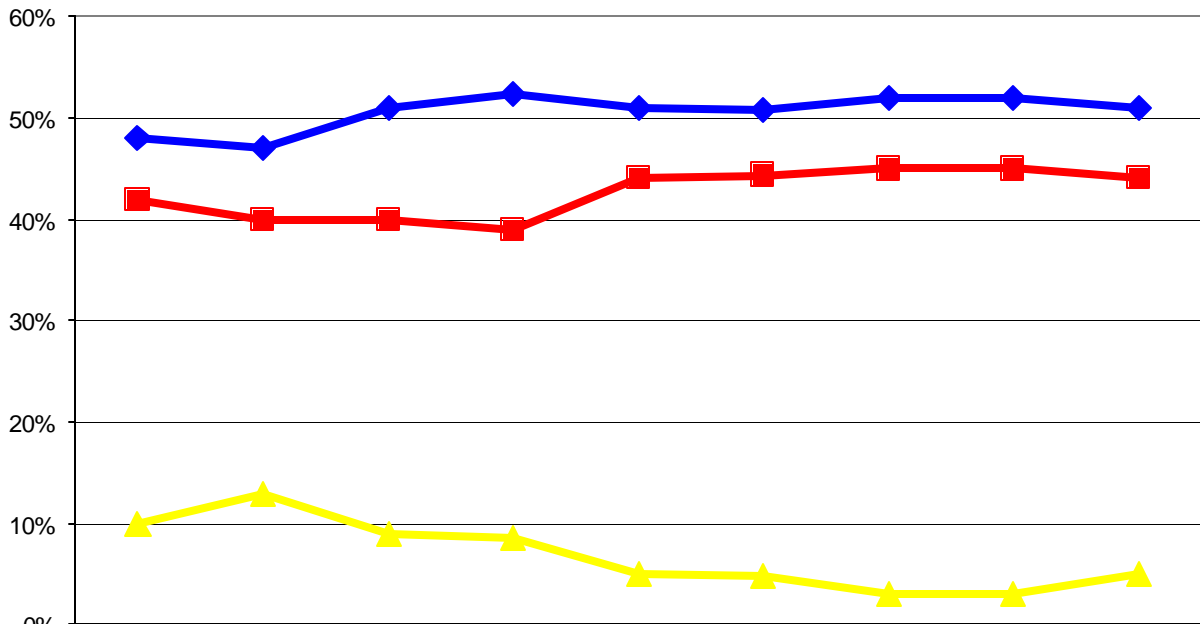
#### No Movement By Either In Last Five Days

San Diego – In the daily tracking poll released today by Datamar Inc., Jerry Sanders retains his lead of 51% to 44% for Donna Frye. Among *City of San Diego high-propensity registered voters*, Sanders’ 7% lead has remained the same since last Wednesday. This non-partisan race is sharply divided among political parties. Frye leads among Democrats, 73%, to 20% for Sanders. Sanders’ lead among Republicans is 85% to 12% for Frye. Sanders leads with males 51% and with females 50%, while Frye garners support from 43% of males and 44% of females.



Of those that stated they were extremely likely to vote, Sanders leads 51% to Frye’s 44%.

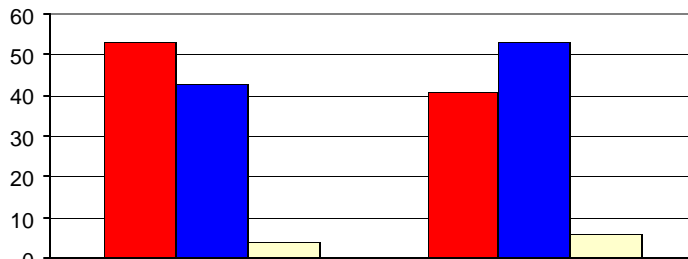
### Mayor's Race



	09/15/05	10/05/05	10/20/05	10/26/05	11/2/2005	11/3/2005	11/4/2005	11/5/2005	11/6/2005
◆ Sanders	48%	47%	51%	52%	51%	51%	52%	52%	51%
■ Frye	42%	40%	40%	39%	44%	44%	45%	45%	44%
▲ DK	10%	13%	9%	9%	5%	5%	3%	3%	5%

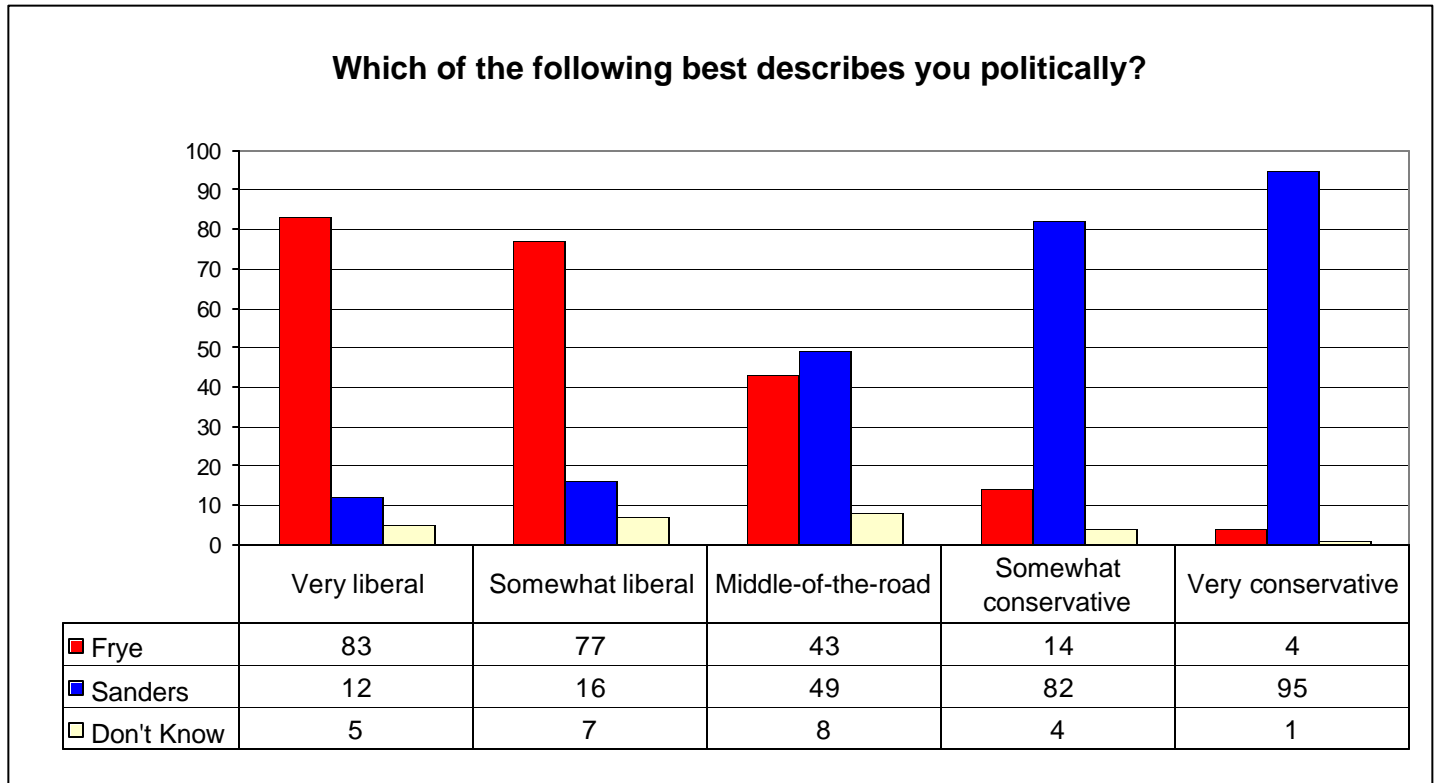
Among labor union households leads Frye leads at 53% with Sanders, 43%. Among non-labor union households Sanders leads 53% to 41% for Frye.

### Labor & Non-Labor Voters

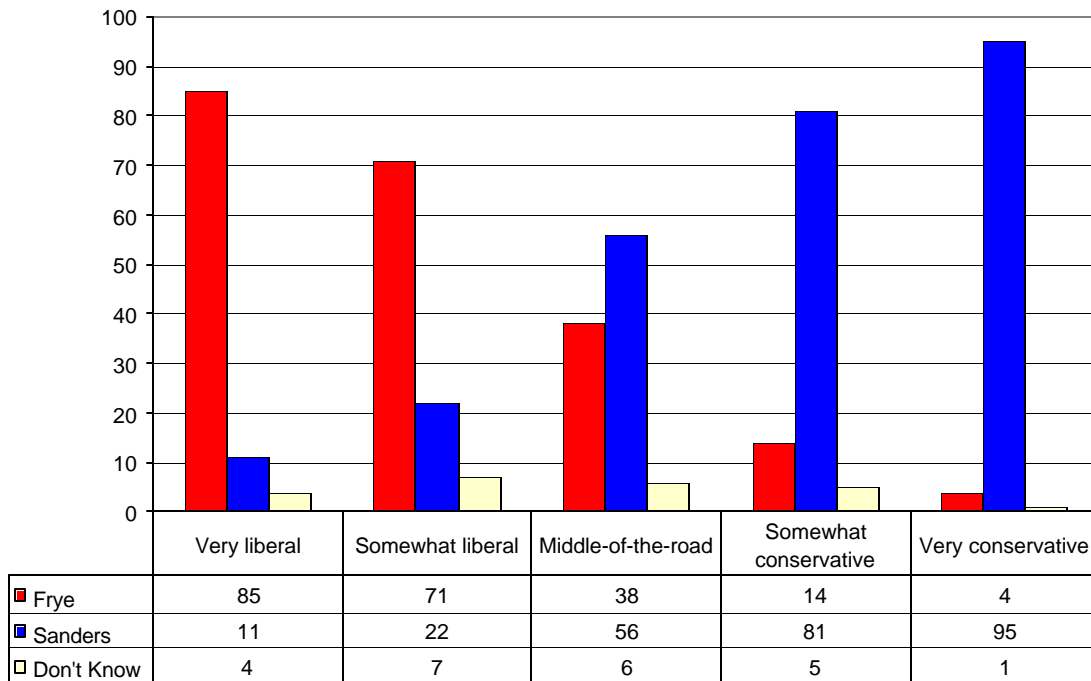


	Labor	Non-Labor
■ Donna Frye	53	41
■ Jerry Sanders	43	53
■ Don't Know	4	6

On political ideology, Frye continues to have a large lead among the very liberal, with 83% to Sanders' 12%. Sanders continues his larger lead among the very conservative, 95% to Frye's 4%. The middle-of-the-road is leaning toward Sanders 49% to Frye's 43%.



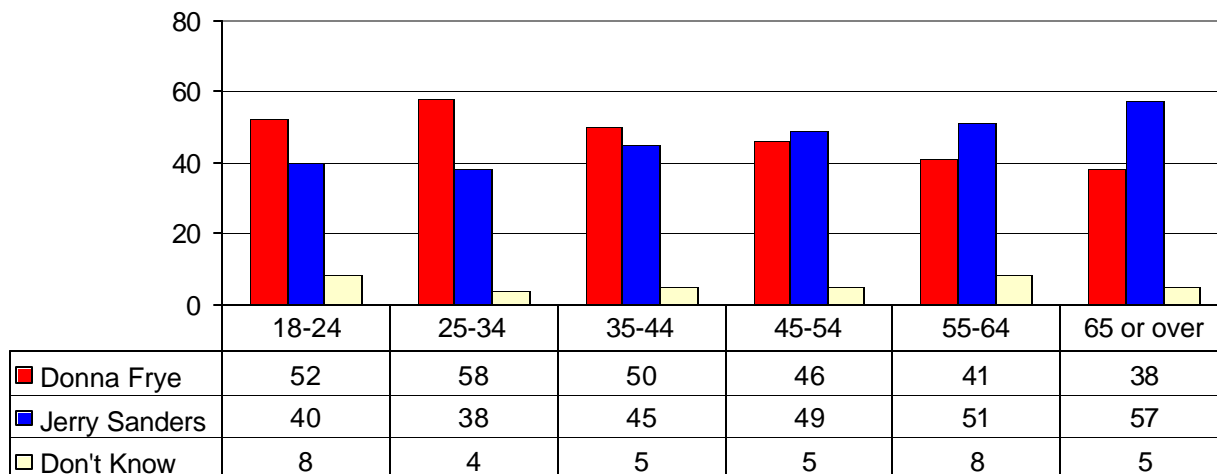
### Which of the following best describes you on social issues?



On social issues, both Sanders and Frye have constantly remained solid with their respective bases. Sanders receives support from 95% of social very conservatives while Frye receives 85% from social very liberals. In the middle-of-the-road group, Sanders has expanded his lead to 56%, with Frye dropping to 38%.

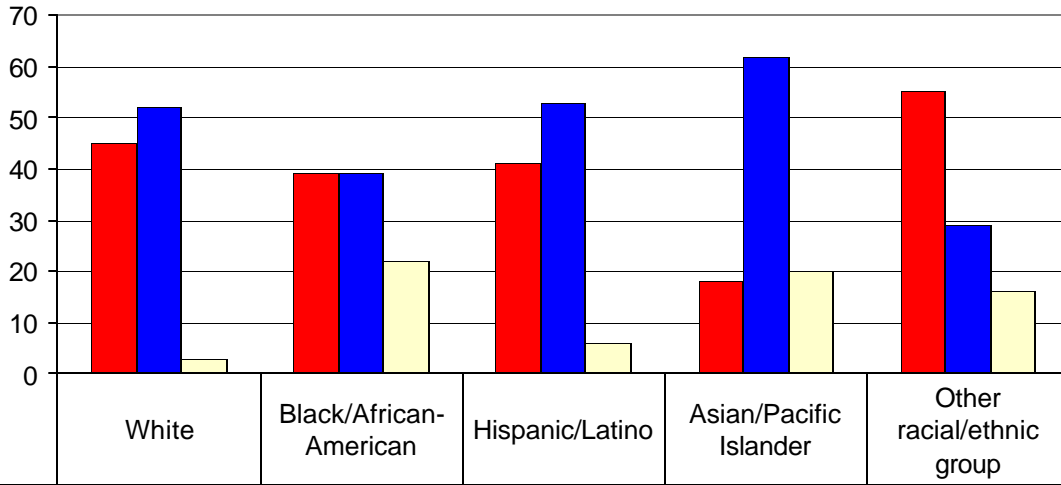
Frye leads among the younger age groups, 18-24 year-olds Frye 52% Sanders 40%, 25-34 year-olds 58% to 38%, and 35 to 44 year olds Frye 50%, Sander 45%. Sanders leads with the older voters, 45-54 year olds sanders 49% to Frye's 46%, 55-64 year olds Sanders 51% to Frye's 41%, and 65 or over Sanders 57% to Frye's 38%.

### Age Ranges



White voters support Sanders 52% to 45% for Frye. Latinos favor Sanders, 53% to Frye, 41%. African-Americans are tied at 39%.

### Racial And Ethnic Groups

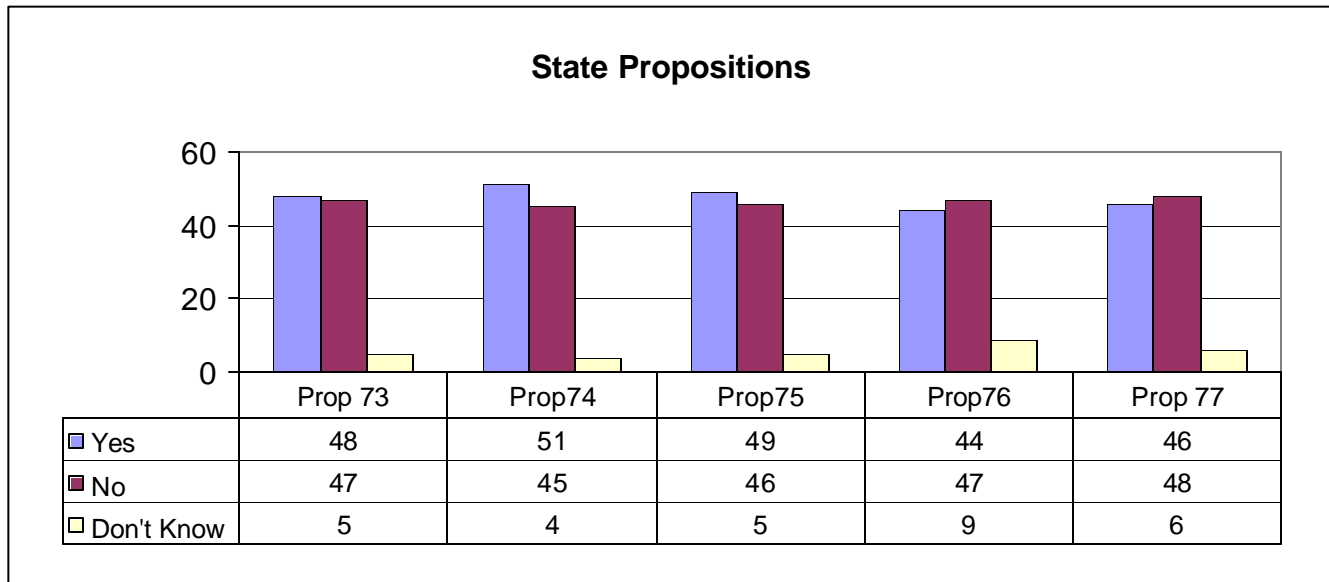


Donna Frye	45	39	41	18	55
Jerry Sanders	52	39	53	62	29
Don't Know	3	22	6	20	16

**Among City of San Diego high-propensity registered voters**, Proposition 73 (the “Waiting Period and Parental Notification Before Termination of Minor’s Pregnancy” initiative) leads 48% to 47% with 5% undecided.

Proposition 74, the “Public School Teachers Waiting Period for Permanent Status Dismissal” initiative, is leading 51% to 45% with 4% undecided.

Proposition 75, the “Public Employee Union Dues Restrictions on Political Contributions. Employee Consent Requirement” initiative is leading 49% to 46% with 5% undecided.



Proposition 76, the “State Spending and School Funding Limits” initiative, is behind 44% to 47% with 9% undecided.

Proposition 77, the “Redistricting Initiative”, is behind 46% to 48% with 6% undecided.

## **About the Survey**

The Survey is a project of Datamar, Inc. Datamar, Inc. offers online tools for political candidates and committees that help organize the basic information for a successful campaign including: Surveys, Voter Contact Information, Voter Demographic Information, Legislative Races and Proposition Results. Datamar, also provides voter contact and GOTV phone services.

Findings are based on a telephone survey of 1,032 San Diego high-propensity registered voters. Registered voters polled are those who voted in the 2004 primary and general elections. These voters were interviewed on November 5<sup>th</sup>, and 6<sup>th</sup>, 2005. Interviews took place using a proprietary algorithm to generate a random sample of voters. The sampling error for the total sample is +/- 3.1 percent at the 95 percent confidence level. The sampling error for subgroups is larger.

Surveys are available from our website at: [www.datamar.com](http://www.datamar.com)

# DATAMAR, INC.

November 7, 2005

## Survey Toplines

Sample size 1,032

+/- 3.1 percent sampling error

November 5, 6, 2005

High-propensity registered San Diego voters

Q1. Are you a registered voter in the City of San Diego?

Yes 100%

No

Don't Know

Q2. Voters in the City of San Diego will vote for mayor on November 8th. If this election for mayor were held today, for whom would you vote?

Donna Frye, councilmember/business owner 44%

Jerry Sanders, businessman/retired police chief 51%

Don't know 5

Q3. Proposition 73 is the "Waiting Period and Parental Notification Before Termination of Minor's Pregnancy" initiative. It requires, with certain exceptions, a physician to notify the parent or legal guardian of a pregnant minor at least 48 hours before performing an abortion involving that minor. If the election were held today, would you vote yes or no on Proposition 73?

Yes 48%

No 47%

Don't know 5%

Q4. Proposition 74 is the "Public School Teachers Waiting Period for Permanent Status Dismissal" initiative. It increases length of time required before a teacher may become a permanent employee from two complete consecutive school years to five complete consecutive school years. If the election were held today, would you vote yes or no on Proposition 74?

Yes 51%

No 45%

Don't know 4%



Q5. Proposition 75 is the “Public Employee Union Dues. Restrictions on Political Contributions. Employee Consent Requirement” initiative. It prohibits the use by public employee labor organizations of public employee dues or fees for political contributions except with the prior consent of individual public employees each year on a specified written form. If the election were held today, would you vote yes or no on Proposition 75?

Yes	49%
No	46%
Don't know	5%

Q6. Proposition 76 is the “State Spending and School Funding Limits” initiative. It limits state spending to prior year's levels plus the average revenue growth of the previous years. It also changes the minimum school funding requirements under proposition 98, and eliminates repayment requirement when minimum funding is suspended. If the election were held today would you vote yes or no on Proposition 76?

Yes	44%
No	47%
Don't know	9%

Q7. Proposition 77 is the “Redistricting Initiative” It amends the process for redistricting California's Senate, Assembly, Congressional and Board of Equalization districts. It requires a panel of three retired judges, selected by legislative leaders, to adopt a new redistricting plan if measure passes, and after each national census. If the election were held today, would you vote yes or no on Proposition 77?

Yes	46%
No	48%
Don't know	6%

Q8. What is the likelihood of your voting in the November 8, 2005 special election -- are you extremely likely, very likely, somewhat likely, or not very likely at all to vote?

Extremely Likely	95%
Very Likely	3%
Somewhat Likely	1%
Not Very Likely	1%

Q9. Which of the following best describes you politically?

Very liberal	15%
Somewhat liberal	21%
Middle-of-the-road	26%
Somewhat conservative	24%
Very conservative	13%
Don't know	1%

Q10. On social issues, what would you say best describes you?

Very liberal	17%
Somewhat liberal	22%
Middle-of-the-road	26%
Somewhat conservative	21%
Very conservative	13%
Don't know	1%

Q11. On fiscal issues, what would you say best describes you?

Very liberal	9%
Somewhat liberal	13%
Middle-of-the-road	29%
Somewhat conservative	28%
Very conservative	19%
Don't know	2%

Now, just a few final questions for statistical purposes only --

Q12. Are you?

Male	47%
Female	53%

Q13. What is your age, please?

18-24	2%
25-34	8%
35-44	12%
45-54	20%
55-64	23%
65 or over	35%

Q14. What is the highest level of education you have completed?

Some high school	2%
Graduated high school	8%
Technical/vocational	2%
Some college	21%
Graduated college	40%
Graduate/professional School	27%

Q15. In what political party are you registered to vote?

Democrat	42%
Republican	40%
Another party	4%
No party registration	14%

Q16. Are you or is anyone in your household a member of a labor union, such as trade unions, service employee unions, public employee unions, and teachers unions?

Yes	21%
No	77%
Don't know	2%

Q17. What do you consider to be your race/ethnic group?

White	78%
Black/African-American	3%
Hispanic/Latino	11%
Asian/Pacific Islander	3%
Other racial/ethnic group	5%