

Datamar Inc.



California Presidential Primary Voter Turnout Analysis Hispanic vs. Non-Hispanic



Datamar Inc.

California

Presidential Primary Voter Turnout Analysis

Hispanic vs. Non-Hispanic

Date: July 15, 2008

Contact: Raul Furlong

www.datamar.com

San Diego – Datamar Inc. released today a report of a comparative analysis of the voting results between Hispanics and non-Hispanics who voted in the February 5, 2008 California Presidential Primary. The Hispanic voters were identified by having either a Hispanic first name, last name, or place of birth in a Latin American country.

The analysis compares Hispanic/Non-Hispanic voting characteristics within political party affiliation, age groups, and years of registration.

The January 22, 2008 release of voter information, from the California Secretary of State’s office, indicates that there were 22,948,059 eligible voters and of those, there were 15,712,753, 68.47% registered voters.

The percent of voters that actually voted, broken down by political affiliation, and using the registered number of voters (15,712,753) as a base, are: Democrats 27.4%, Republicans 19.3%, Non-partisan 7.9%, and other party 1.7%.

The result of the total voter turnout was 56.3%.

	Reg. voters percent	Turnout percent of all registered voters
Democratic	43.9	27.4
Republican	33.3	19.3
Non-partisan	19.3	7.9
Other party	4.4	1.7
Total	100.0	56.3

Part 1. Analysis of total voter turnout for primary

The Democratic portion of the total turnout was greater than any of the other partisan groups, 48.6 %. In fact, it was slightly greater, by 0.3%, than the combined total for the other two largest groups, the Republicans, 34.3%, and Non-partisans, 14.0%.

Party	Percent
Democratic	48.6
Republican	34.3
Non-partisan	14.0
Other party	3.0
Total	100.0

The 50-64 age group had the largest portion of the vote, 32.7 %, of any other group. The voters that are 50+ years old controlled almost 60% of the vote, 59.1%.

Age Group	Percent
18-34	15.3
35-49	25.6
50-64	32.7
65+	26.4
Total	100.0

Years Registered is the number of years a voter has been registered to vote. For example: voters with a range of 0-1 are new registrants who have voted for the first time in an election.

Years Registered	Percent
0-1	11.6
2-4	23.2
5-8	20.0
9 +	45.1
Total	100.0

The Hispanic voter was 18.8%, and the Non-Hispanic was 81.2%, of the total votes cast in the primary.

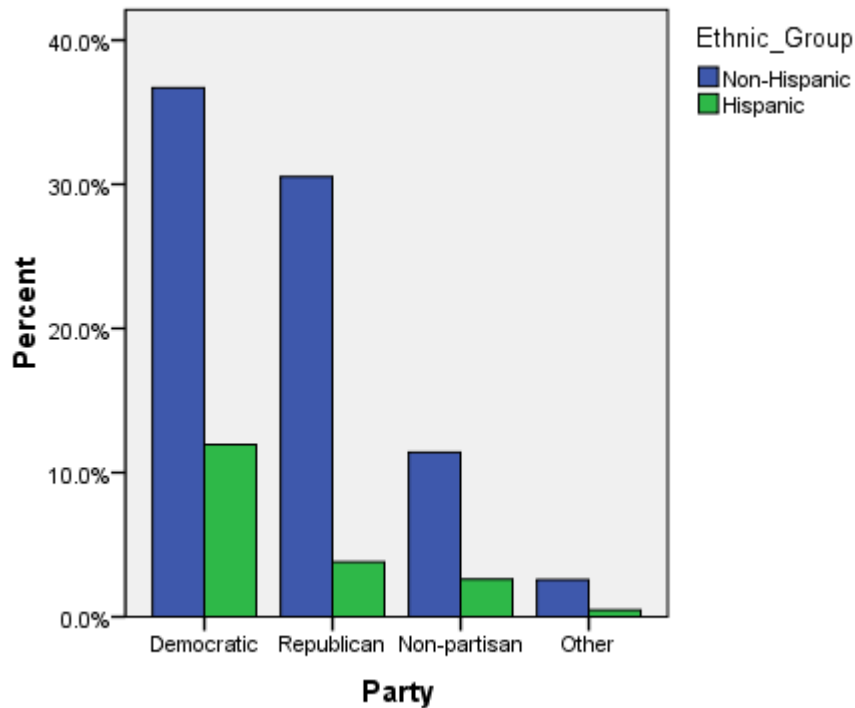
Ethnic Group	Percent
Non-Hispanic	81.2
Hispanic	18.8
Total	100.0

Part 2. Analysis of Non-Hispanic, Hispanic voter turnout for primary

The Non-Hispanic total vote was 81.2%, the Democrats portion totaled 36.7%, the Republicans were 30.5%, the Non-partisans were 11.4% and Other parties were 2.6%.

The Hispanic total vote was 18.8%, the Democrats portion totaled 11.9%, the Republicans were 3.8%, the Non-partisans were 2.6% and other parties were 0.5%.

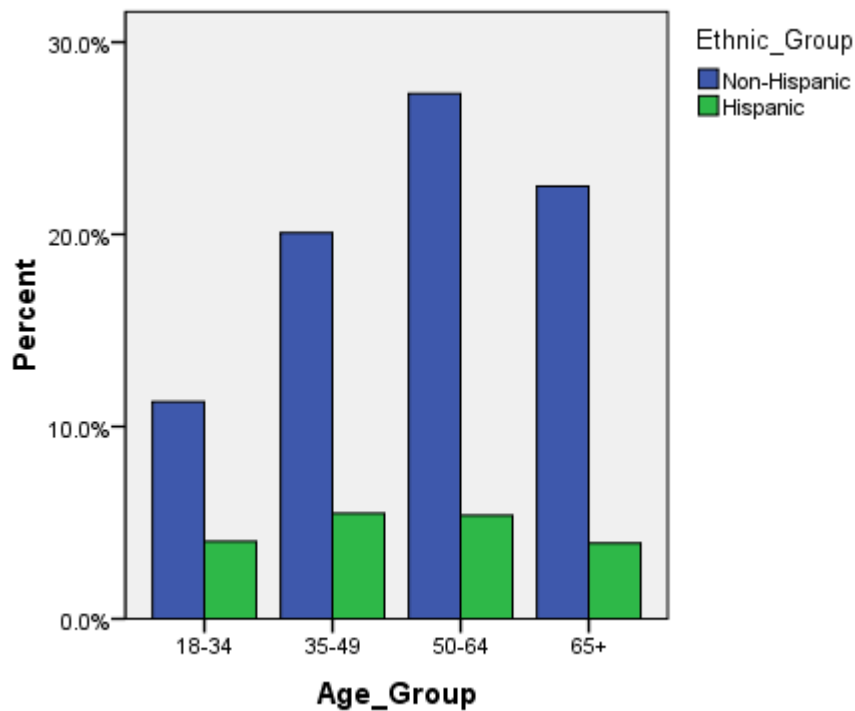
		Political Party				
		Democratic	Republican	Non-partisan	Other	Total
Ethnic Group	Non-Hispanic	36.7%	30.5%	11.4%	2.6%	81.2%
	Hispanic	11.9%	3.8%	2.6%	.5%	18.8%
	Total	48.6%	34.3%	14.0%	3.0%	100.0%



The Non-Hispanic total vote of 81.2% for ages 18-34 was 11.3%, the vote for ages 35-49 was 20.1%, the vote for ages 50-64 was 27.3%, and for ages 65 and older was 22.5%.

The Hispanic total vote of 18.8% for ages 18-34 was 4.0%, the vote for ages 35-49 was 5.5%, the vote for ages 50-64 was 5.4%, and for ages 65 and older was 3.9%.

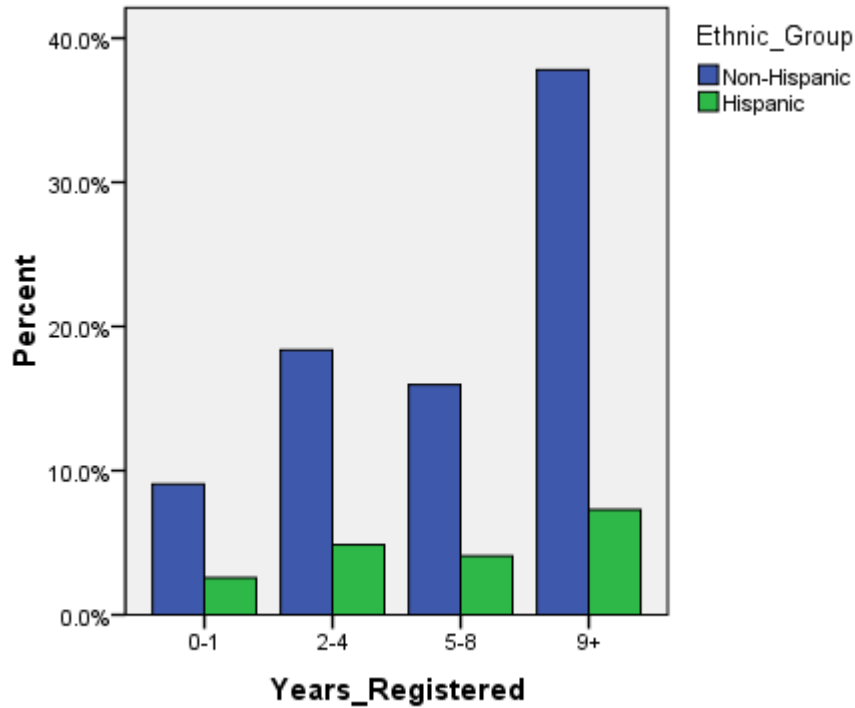
		Age Group				
		18-34	35-49	50-64	65+	Total
Ethnic Group	Non-Hispanic	11.3%	20.1%	27.3%	22.5%	81.2%
	Hispanic	4.0%	5.5%	5.4%	3.9%	18.8%
	Total	15.3%	25.6%	32.7%	26.4%	100.0%



The Non-Hispanic total vote of 81.2% for years registered 0-1 was 9.1%, for years registered 2-4 was 18.4%, for years registered 5-8 was 16.0% and for 9 or more years was 37.8%.

The Hispanic total vote of 18.8% for years registered 0-1 was 2.6%, for years registered 2-4 was 4.9%, for years registered 5-8 was 4.1%, and for years registered 9 or more years was 7.3%.

		Years Registered				
		0-1	2-4	5-8	9+	Total
Ethnic Group	Non-Hispanic	9.1%	18.4%	16.0%	37.8%	81.2%
	Hispanic	2.6%	4.9%	4.1%	7.3%	18.8%
	Total	11.6%	23.2%	20.0%	45.1%	100.0%



Part 3. Ethnic Population Breakdown by County

County	Non-Hispanic percent	Hispanic percent
Alameda	85.8	14.2
Alpine	93.3	6.7
Amador	93.4	6.6
Butte	91.9	8.1
Calaveras	92.9	7.1
Colusa	78.5	21.5
Contra Costa	86.9	13.1
El Dorado	92.9	7.1
Fresno	75.8	24.2
Glenn	87.2	12.8
Humboldt	93.5	6.5
Imperial	44.4	55.6
Inyo	92.3	7.7
Kern	78.8	21.2
Kings	74.7	25.3
Lake	92.0	8.0
Lassen	93.0	7.0
Los Angeles	72.4	27.6
Madera	80.3	19.7
Marin	92.6	7.4
Mariposa	93.1	6.9
Mendocino	92.0	8.0
Merced	74.6	25.4
Modoc	94.0	6.0
Mono	93.8	6.2
Monterey	75.7	24.3
Napa	87.9	12.1
Nevada	94.5	5.5
Orange	84.6	15.4
Placer	91.8	8.2
Plumas	94.6	5.4
Riverside	78.8	21.2

County	Non-Hispanic percent	Hispanic percent
Sacramento	87.5	12.5
San Benito	68.8	31.2
San Bernardino	73.6	26.4
San Diego	83.9	16.1
San Francisco	87.5	12.5
San Joaquin	79.4	20.6
San Luis Obispo	90.6	9.4
San Mateo	84.2	15.8
Santa Barbara	82.9	17.1
Santa Clara	83.9	16.1
Santa Cruz	86.5	13.5
Shasta	93.9	6.1
Sierra	93.2	6.8
Siskiyou	94.1	5.9
Solano	84.7	15.3
Sonoma	89.9	10.1
Stanislaus	80.2	19.8
Sutter	87.5	12.5
Tehama	91.6	8.4
Trinity	94.7	5.3
Tulare	74.8	25.2
Tuolumne	92.9	7.1
Ventura	81.3	18.7
Yolo	84.6	15.4
Yuba	88.5	11.5
Total	81.2	18.8

Part 4. Conclusion of voter turnout.

The Democrats having received 11.9% of the Hispanic vote in the primary hold an overwhelming advantage over the Republicans.

If we assume that the proportion of voters for the general election were to be the same, The Republicans would not win even if they received the total 14% of the Non-partisan vote. They will need to make substantial inroads into the Hispanic and even convince some of the Democratic base to their side.

		Political Party				
		Democratic	Republican	Non-partisan	Other	Total
Ethnic Group	Non-Hispanic	36.7%	30.5%	11.4%	2.6%	81.2%
	Hispanic	11.9%	3.8%	2.6%	.5%	18.8%
	Total	48.6%	34.3%	14.0%	3.0%	100.0%

Methodology: This analysis was produced using the voter file from the California Secretary of State. For research purposes we defined Hispanic as an individual voter who has one or more Hispanic names, or whose country of origin is a Latin American country. Voters who do not have a Hispanic name are not included as Hispanic.

The methodology for identifying this group, while not complete, is a first step at bringing some organization at identifying sub-groups in political research.

The term Hispanic is used vs. the term Latino for no particular reason other than for consistency of using one name.

Datamar provides political polls, public opinion research, data analysis and data support services to corporate and public sector clients.