

New York Statewide Survey

Republican Presidential Primary

Date: January 23, 2008

Contact: Raul Furlong

619-579-8244

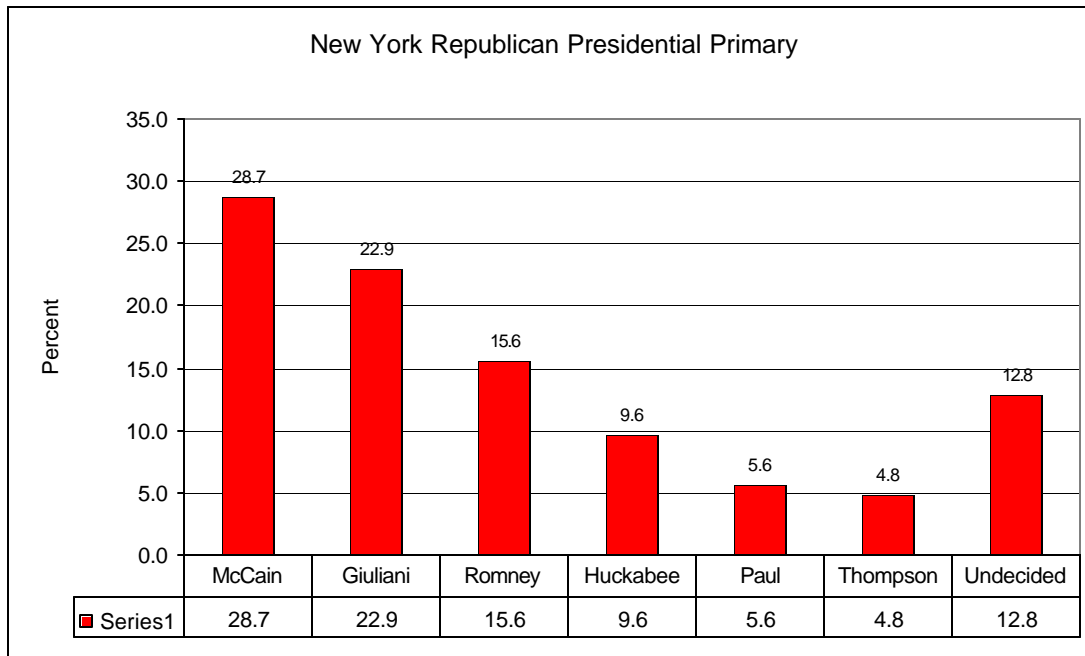
www.datamar.com

Sample size 603

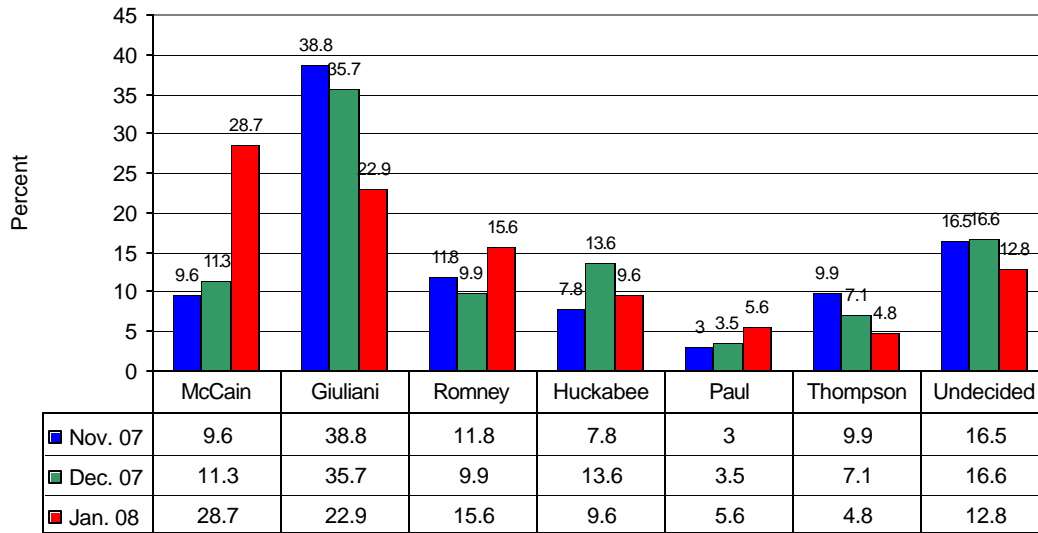
+/- 4.0 percent sampling error

January 20 - 22, 2008

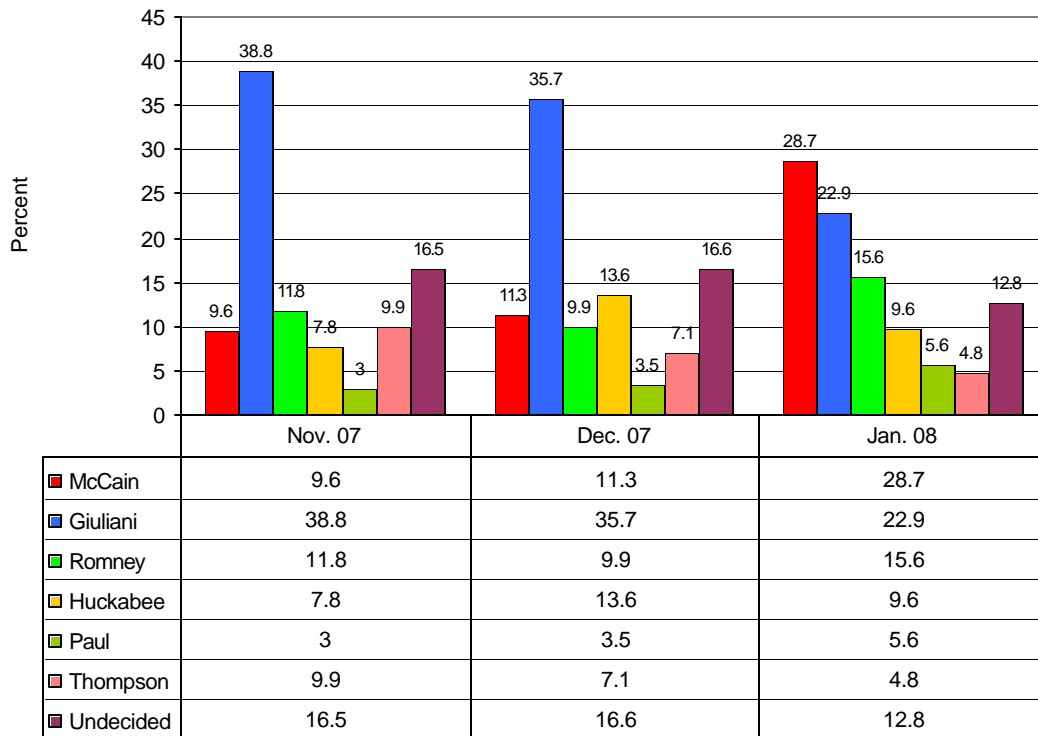
San Diego – A poll released today by Datamar Inc., shows U.S. Senator from Arizona John McCain in the lead with 28.7%, in the New York Republican Presidential Primary. Former New York Mayor Rudy Giuliani dropped to second place with 22.9%. Former Governor of Massachusetts Mitt Romney is in third place with 15.6%. Former Governor of Arkansas Mike Huckabee, has moved to fourth place with 9.6%. Findings are based on a January 20 - 22, 2008, survey of New York voters.



New York Republican Presidential Primary Tracking Chart



New York Republican Presidential Primary Tracking Chart



Sample size 603
+/- 4.0 percent sampling error
January 20 - 22, 2008

Methodology: Findings are based on December 2 - 8, 2008 survey of New York voters. The survey was conducted using an automated telephone dialer using the voice of a professional announcer, and online, where respondents used a login to access the survey.

The targeted-registration-based-sampling (TRBS)* selection criteria were based on election cycles and other voter factors in New York. Datamar proprietary algorithms were used to generate random samples from the target group for calling.

The margin of error for the total sample is +/- 4.1 percent at the 95 percent confidence level.

Where necessary, responses were weighted according to age, gender, and political party.

* "targeted-registration-based-sampling", "TRBS" and "(TRBS)" are service marks of Datamar Inc.



New York Statewide Survey

Republican Presidential Primary

Candidates Toplines And Crosstabs

January 23, 2008

Sample size 603

+/- 4.0 percent sampling error

January 20 - 22, 2008

Q1. Are you a registered voter in New York?

	Percent
Yes	100.0

Q2. In what political party are you registered to vote?

	Percent
Republican	100.0

Q3. Are you?

	Percent
Male	49.1
Female	50.9
Total	100.0

	Gender		Total
	Male	Female	
Paul	3.2%	2.5%	5.6%
Thompson	2.2%	2.7%	4.8%
McCain	13.8%	14.9%	28.7%
Romney	9.0%	6.6%	15.6%
Giuliani	12.4%	10.4%	22.9%
Huckabee	4.6%	5.0%	9.6%
Undecided	4.0%	8.8%	12.8%
Total	49.1%	50.9%	100.0%

Q4. What is your age, please?

	Percent
18-34	12.9
35-49	28.4
50-64	29.0
65 or older	29.7
Total	100.0

	Age				Total
	18-34	35-49	50-64	65 or older	
Paul	1.0%	1.5%	1.2%	2.0%	5.6%
Thompson	.7%	1.5%	2.0%	.7%	4.8%
McCain	3.0%	7.1%	9.5%	9.1%	28.7%
Romney	1.0%	3.8%	5.0%	5.8%	15.6%
Giuliani	3.5%	7.8%	6.3%	5.3%	22.9%
Huckabee	2.7%	3.6%	2.2%	1.2%	9.6%
Undecided	1.2%	3.0%	3.0%	5.6%	12.8%
Total	12.9%	28.4%	29.0%	29.7%	100.0%

5. What is the highest level of education you have completed?

	Percent
High school graduate or less	16.3
Some college/trade school	28.2
Graduated college or more	55.6
Total	100.0

	Education			Total
	High school graduate or less	Some college/trade school	Graduated college or more	
Paul	.5%	1.3%	3.8%	5.6%
Thompson	.7%	1.2%	3.0%	4.8%
McCain	5.5%	7.1%	16.1%	28.7%
Romney	1.8%	4.6%	9.1%	15.6%
Giuliani	3.3%	7.0%	12.6%	22.9%
Huckabee	1.7%	3.3%	4.6%	9.6%
Undecided	2.8%	3.6%	6.3%	12.8%
Total	16.3%	28.2%	55.6%	100.0%

Q6. Are you or is anyone in your household a member of a labor union, such as trade union, service employee union, public employee union, or teachers union?

	Percent
Yes	34.7
No	63.7
Don't know	1.7
Total	100.0

	Member of labor union			Total
	Yes	No	Don't know	
Paul	1.7%	3.6%	.3%	5.6%
Thompson	2.0%	2.8%		4.8%
McCain	9.8%	18.1%	.8%	28.7%
Romney	6.0%	9.3%	.3%	15.6%
Giuliani	8.1%	14.6%	.2%	22.9%
Huckabee	3.3%	6.3%		9.6%
Undecided	3.8%	9.0%		12.8%
Total	34.7%	63.7%	1.7%	100.0%

Q7. What do you consider to be your ethnic group?

	Percent
White non-hispanic	96.7
Hispanic/latino	1.3
Black/African-American	.5
Asian/other	1.5
Total	100.0

	Ethnic group				Total
	White non-hispanic	Hispanic/latino	Black/African-American	Asian/other	
Paul	5.1%	.2%		.3%	5.6%
Thompson	4.6%		.2%		4.8%
McCain	28.2%	.2%	.2%	.2%	28.7%
Romney	15.3%	.3%			15.6%
Giuliani	22.2%	.3%	.2%	.2%	22.9%
Huckabee	9.3%	.2%		.2%	9.6%
Undecided	11.9%	.2%		.7%	12.8%
Total	96.7%	1.3%	.5%	1.5%	100.0%

Q8. What is your marital status?

	Percent
Married	64.3
Separated/divorced/widowed	24.5
Never married	11.1
Total	100.0

	Marital status			Total
	Married	Separated/divorced/widowed	Never married	
Paul	3.5%	1.5%	.7%	5.6%
Thompson	3.5%	1.0%	.3%	4.8%
McCain	17.7%	7.6%	3.3%	28.7%
Romney	10.4%	3.8%	1.3%	15.6%
Giuliani	15.9%	3.8%	3.2%	22.9%
Huckabee	6.5%	2.3%	.8%	9.6%
Undecided	6.8%	4.5%	1.5%	12.8%
Total	64.3%	24.5%	11.1%	100.0%

Q9. How long has your family been in this country? Are you first generation American- you emigrated from another country, second generation–your parents emigrated from another country, or third generation or greater–your grandparents emigrated from another country?

	Percent
Emigrated from another country	4.0
Parents emigrated	12.6
Grandparents or greater emigrated	79.9
Don't know	3.5
Total	100.0

	Generation				Total
	Emigrated from another country	Parents emigrated	Grandparents or greater emigrated	Don't know	
Paul	.3%	.8%	4.3%	.2%	5.6%
Thompson		.2%	4.3%	.3%	4.8%
McCain	1.7%	3.5%	22.7%	.8%	28.7%
Romney	.3%	2.5%	12.8%		15.6%
Giuliani	.3%	3.5%	18.6%	.5%	22.9%
Huckabee	.2%	.7%	8.1%	.7%	9.6%
Undecided	1.2%	1.5%	9.1%	1.0%	12.8%
Total	4.0%	12.6%	79.9%	3.5%	100.0%

Q10. What is your household income?

	Percent
Less than \$40,000	26.7
\$40,001-80,000	36.7
\$80,001-120,000	19.9
\$120,001 or more	16.7
Total	100.0

	Household income				Total
	Less than \$40,000	\$40,001-80,000	\$80,001-120,000	\$120,001 or more	
Paul	2.2%	1.5%	1.2%	.8%	5.6%
Thompson	1.2%	1.8%	1.3%	.5%	4.8%
McCain	7.8%	9.6%	5.1%	6.1%	28.7%
Romney	4.0%	6.5%	2.5%	2.7%	15.6%
Giuliani	4.8%	7.5%	6.1%	4.5%	22.9%
Huckabee	2.0%	5.3%	2.0%	.3%	9.6%
Undecided	4.8%	4.5%	1.7%	1.8%	12.8%
Total	26.7%	36.7%	19.9%	16.7%	100.0%

Q11. Which of the following best describes you politically?

	Percent
Very liberal	2.8
Somewhat liberal	16.4
Somewhat conservative	49.4
Very conservative	24.2
Don't know	7.1
Total	100.0

	Political ideology					Total
	Very liberal	Somewhat liberal	Somewhat conservative	Very conservative	Don't know	
Paul		1.7%	2.5%	1.0%	.5%	5.6%
Thompson		.5%	2.0%	1.8%	.5%	4.8%
McCain	.7%	6.5%	16.4%	3.8%	1.3%	28.7%
Romney	.2%	1.2%	7.3%	6.3%	.7%	15.6%
Giuliani	.5%	2.5%	11.8%	6.1%	2.0%	22.9%
Huckabee	.2%	.8%	4.6%	3.6%	.3%	9.6%
Undecided	1.3%	3.3%	4.8%	1.5%	1.8%	12.8%
Total	2.8%	16.4%	49.4%	24.2%	7.1%	100.0%

Q12. Do you approve or disapprove of the way President Bush is handling his job?

	Percent
Approve	47.4
Disapprove	41.0
Don't know	11.6
Total	100.0

	President's approval			Total
	Approve	Disapprove	Don't know	
Paul	.5%	4.6%	.5%	5.6%
Thompson	2.7%	2.0%	.2%	4.8%
McCain	11.6%	13.8%	3.3%	28.7%
Romney	10.0%	3.8%	1.8%	15.6%
Giuliani	14.8%	5.6%	2.5%	22.9%
Huckabee	4.8%	3.3%	1.5%	9.6%
Undecided	3.2%	7.8%	1.8%	12.8%
Total	47.4%	41.0%	11.6%	100.0%

Q13. Do you approve or disapprove of the way Congress is handling its job?

	Percent
Approve	8.1
Disapprove	82.3
Don't know	9.6
Total	100.0

	Congress approval			Total
	Approve	Disapprove	Don't know	
Paul	.3%	5.0%	.3%	5.6%
Thompson		4.5%	.3%	4.8%
McCain	2.5%	23.4%	2.8%	28.7%
Romney	.5%	14.1%	1.0%	15.6%
Giuliani	2.3%	18.4%	2.2%	22.9%
Huckabee	1.5%	7.5%	.7%	9.6%
Undecided	1.0%	9.5%	2.3%	12.8%
Total	8.1%	82.3%	9.6%	100.0%

Q14. Do you think things in the country are generally going in the right direction or the wrong direction?

	Percent
Right direction	23.4
Wrong direction	67.7
Don't know	9.0
Total	100.0

	Right wrong direction			Total
	Right direction	Wrong direction	Don't know	
Paul	.3%	5.1%	.2%	5.6%
Thompson	1.5%	3.0%	.3%	4.8%
McCain	5.0%	20.9%	2.8%	28.7%
Romney	5.6%	9.3%	.7%	15.6%
Giuliani	8.1%	11.6%	3.2%	22.9%
Huckabee	2.0%	6.8%	.8%	9.6%
Undecided	.8%	10.9%	1.0%	12.8%
Total	23.4%	67.7%	9.0%	100.0%

Q15. Turning to economic conditions in the U.S., do you think that during the next twelve months we will have good times financially, or bad times?

	Percent
Good times	23.1
Bad times	67.8
don't know	9.1
Total	100.0

	Good times financially			Total
	Good times	Bad times	don't know	
Paul	.2%	4.8%	.7%	5.6%
Thompson	1.7%	2.8%	.3%	4.8%
McCain	3.8%	22.6%	2.3%	28.7%
Romney	6.0%	8.8%	.8%	15.6%
Giuliani	8.8%	11.9%	2.2%	22.9%
Huckabee	1.3%	7.1%	1.2%	9.6%
Undecided	1.3%	9.8%	1.7%	12.8%
Total	23.1%	67.8%	9.1%	100.0%

Q16. What do you think is the most important problem facing the country today? immigration, the environment, the economy, the war in Iraq, taxes, health care, or other?

	Percent	Valid Percent	Cumulative Percent
Immigration	20.6	20.6	20.6
Environment	5.0	5.0	5.0
Economy	34.8	34.8	34.8
War in Iraq	15.6	15.6	15.6
Taxes	12.8	12.8	12.8
Health care	6.6	6.6	6.6
Other	4.6	4.6	4.6
Total	100.0	100.0	100.0

	Most important issue							Total
	Immigration	Environment	Economy	War in Iraq	Taxes	Health care	Other	
Paul	.7%	.3%	1.5%	2.3%	.3%	.5%		5.6%
Thompson	1.8%		1.7%	.2%	1.0%	.2%		4.8%
McCain	4.0%	2.0%	12.1%	4.8%	2.3%	2.5%	1.0%	28.7%
Romney	5.1%	.7%	4.0%	2.0%	2.7%	.5%	.7%	15.6%
Giuliani	6.3%	.8%	6.5%	3.6%	3.8%	1.2%	.7%	22.9%
Huckabee	1.0%	.3%	3.2%	1.2%	1.5%	.7%	1.8%	9.6%
Undecided	1.7%	.8%	6.0%	1.5%	1.2%	1.2%	.5%	12.8%
Total	20.6%	5.0%	34.8%	15.6%	12.8%	6.6%	4.6%	100.0%

Q17. What do you consider your main source for news and information?

	Percent
Newspapers	20.7
Television	49.6
Radio	14.3
Internet	12.4
Friends and family	1.3
Don't know	1.7
Total	100.0

Q18. Mike Huckabee, former Governor of Arkansas; Ron Paul, Texas Congressman; Mitt Romney, former Governor of Massachusetts; Fred Thompson, former U.S. Senator from Tennessee; John McCain, U.S. Senator from Arizona; Rudy Giuliani, former Mayor of New York City.

	Percent
Paul	5.6
Thompson	4.8
McCain	28.7
Romney	15.6
Giuliani	22.9
Huckabee	9.6
Undecided	12.8
Total	100.0

	Nov. 7, 07 Percent	Dec. 9, 07 Percent	Jan. 23, 08 Percent
Paul	3.0	3.5	5.6
Thompson	9.9	7.1	4.8
McCain	9.6	11.3	28.7
Romney	11.8	9.9	15.6
Giuliani	38.8	35.7	22.9
Huckabee	9.6	13.6	9.6
Undecided	16.5	16.6	12.8
Total	100.0	100.0	100.0